

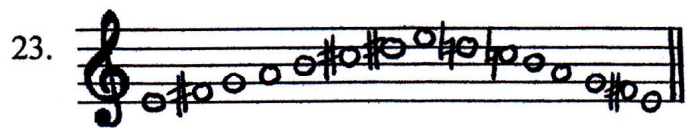
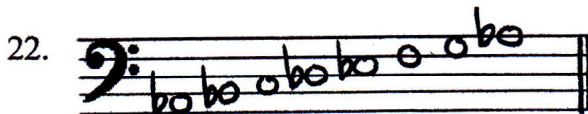
21. Which of the following interval patterns demonstrates a major scale?

(w = whole step; h = half step)

- A. w h w h w h w
- B. w h w w h w h
- C. w w w h w w h
- D. w w h w w w h
- E. w w h w w h w

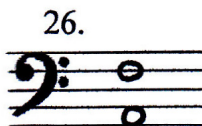
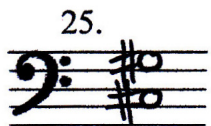
Choose the correct name for the following scales:

- Choose from:
- A. Melodic minor
 - B. Harmonic minor
 - C. Natural minor
 - D. Chromatic
 - E. Major



Choose the correct name for the following intervals:

- Choose from:
- | | |
|------------|-----------------|
| A. major 2 | F. minor 6 |
| B. major 3 | G. perfect 4 |
| C. major 6 | H. perfect 5 |
| D. major 7 | I. diminished 5 |
| E. minor 3 | J. augmented 4 |



27. If you count up from the root (note on which the triad is built) of a minor triad, what sequence of intervals do you find?

- A. minor third and a perfect fifth
- B. minor third and a diminished fifth
- C. major third and an augmented fifth
- D. major third and a perfect fifth

Identify the quality of the following triads:

- Choose from:
- A. major
 - B. minor
 - C. diminished
 - D. augmented

