



THE 47TH ANNUAL
*Christmas
Variety Show*



VARSITY
MEN'S GLEE CLUB

1888

DECEMBER 6-7, 2024



Dear Friends,

*Welcome to the 47th Annual
Christmas Variety Show!*

The Glee Club has been dreaming of putting on this show for the past year and has been preparing the music for the past several months. We are so excited to get to share the evening with all of you. We hope that for the next couple of hours you will be able to sit back, smile, and enjoy yourself while we all celebrate the holiday season.

The Glee Club has a long history of offering great performances designed to entertain and inspire. From our traditional favorites such as “*The First Noel*” to some of our new favorites like “*The Yellow Room*,” we plan this concert so that it will be special for the whole family. We even have a special guest from the North Pole!

On behalf of the Glee Club, I’d like to offer my deep thanks to everyone who has supported the Glee Club over the years. Supporters like you, alum, donors, parents and (most of all) our current Glee Clubbers have been vital to the Glee Club’s continued success.

Thank you to everyone.

Brothers, Sing On!

*John Len Wiles
Director*



One of my most vivid memories of UNI was made possible because I was late for a Glee Club rehearsal... It was a week before the Christmas shows. The Glee Club had already set out from Russell to serenade students in the residence halls. I ran outside, and as I stopped to listen, I could hear the guys near Lawther Hall, singing clearly in the cold night air. I ran as fast as I could to join them, but about 50 yards away, I suddenly stopped...

My fellow 'wandering troubadours' were singing the last measures of 'The First Noel'. Rarely had I heard the Glee Club perform without me. And now, their powerful voices echoed from the old brick walls of Lawther, over the campanile and across the moon-lit campus. I stood in the snow transfixed, and I reveled in that glorious moment of pure sound. As the last notes faded, the residents of Lawther cheered, and so did I.

A Northern Iowa Christmas is like no other. For every Glee Club man who has helped to make the world a better place through music, this is for you. Thank you, gentlemen. Brothers Sing On!

— An alumnus



As former director Bob Byrnes described it, Glee Club members begged people to come to the first Christmas Variety Show in 1978, offering free admission to the 600-seat Russell Hall auditorium. But it was a fun show—slightly irreverent, and full of wonderful holiday music from the Glee Club and the University community.

Every year, the show got better. Glee Club members took initiative and sold tickets, and serenaded co-eds outside the dorms the night before the show. Soon, a ticket to the Variety Show became the hottest ticket in town. A holiday tradition was born.

With assistance from Bob, the Glee Club took the shows from those humble days in Russell Hall, to sold-out performances nearly every year. The move to the 1,550-seat Gallagher-Bluedorn Performing Arts Center in 2000 only broadened the show's appeal. To date, the Glee Club can boast more sold-out performances at the GBPAC than any other student or professional group.



► *A ho-ho-holiday tradition — Santa Claus and Paul Marlow, emcee, come into the audience to ask children (and children at heart) what they would like for Christmas. During one performance, when 4-year-old Betsy replied “a book,” Marlow said, “You’ve just restored my faith in humanity.”*

Bob borrowed ideas from a forgotten Phi Mu Alpha Symphonia show, and made them the Glee Club's own, with such traditional favorites as the Glee Club Play, and the always hilarious Arthur Murder Dancers.

Several Glee Club tunes date back to that first show, such as “We Need A Little Christmas”, “Lo, How A Rose E're Blooming” and “The First Noel”.

The Jazz Combo “Watch For Squirrel” The Glee Club is pleased to feature the the jazz combo known as “Watch For Squirrel” (*sp*) on the Variety Shows. The members of Watch For Squirrel are Sean Kiefer, trumpet; Noah Britten, saxophone; Nathan Boorman, trombone; Lex Adkisson, guitar; Vincent Valadez,



The Jazz Combo “Watch for Squirrel”

bass; Xander Webb, drums; and Christopher Merz, coach.

Orchesis Dance Company is the longest running student organization at UNI. Providing dance instruction of various dance styles with a professional instructor, many performances throughout the year, and student leadership opportunities. Members are chosen through an audition process held at the end of each semester.

UNITUBA is among the oldest tuba and euphonium ensembles in the world. Composed entirely of tuba and euphonium students at UNI, the group is a credit ensemble in the School of Music and rehearses weekly. UNITUBA was formed in 1974 by former UNI faculty member Donald Little and is currently under the direction of Dr. Brett Copeland. UNITUBA performs regularly on campus at UNI and around the state.

The ensemble has been featured in performances at the International Tuba and Euphonium Conferences in Iowa City and Lexington, Kentucky, ITEC Regional Conferences at Illinois State University and Gustavus Adolphus College as well as on tour with the UNI Wind Symphony in Hungary and Italy.



Andante a Capella

Andante a Capella is a student-led and organized treble a cappella group formed in 2022 as a complimentary group to the Cecilians treble choir.

The 15 auditioned members of Andante keep a diverse repertoire of classic choral music combined with contemporary pop and everything in between.

Arthur Murder Dancers

Arthur Murder is the world-renowned and hilarious dance troupe that has performed on every Christmas Variety Show since 1978.

John Carlson of *The Des Moines Register* said of the Arthur Murder Dancers: *“The scary thing is, they were pretty good... The crowd loved it, and why not? It’s one more Christmas tradition that’s worth a trip across Iowa—even on a cold, snowy night.”*

The holiday program is filled with everything from the sublime to the ridiculous. There is no intent to offend anyone with our reverie. All music has been chosen with great thought and sensitivity. Any portrayal in the spirit of fun and entertainment is not intended to demean any group. The Glee Club is fully dedicated to the worth and dignity of every human being, including those in the LGBTQ+ community.



THE GLEE CLUB

is among the most diverse student groups on campus. The members represent many different majors offered by the university, ranging from business and engineering to the arts.



**VARSITY
MEN'S GLEE CLUB**

1888

Excellence

It is our commitment to excellence that defines The UNI Varsity Men's Glee Club. The Glee Club strives to be the hardest-working group on campus.

Our philosophy is: *Anything worthwhile is not easy, and mediocrity is not an option.* Because we challenge each other to work hard and do our very best, Glee Club men have set themselves apart, both within the group and beyond. Past and present members have earned many honors, including the University's highest student achievement award, the Lux Medallion.

The vast majority of Glee Clubbers are not music majors. About 80% of members are majors outside the UNI School of Music, though music majors are always welcome.

We proudly represent our University, the State of Iowa and the United States when touring overseas.

In the span of 64 years, the Varsity Men's Glee Club has toured Europe 22 times, performed with the Waterloo/Cedar Falls Symphony Orchestra and many ensembles in Europe, sung on venues throughout Iowa and the Midwest, recorded many albums, and was even featured in an award-winning documentary.

We take pride in our strong midwest work ethic to make the music the best that it can be. *This is the way.*

Tradition

You don't have a group around as long as the Glee Club without establishing a few traditions along the way.

Many are self-evident, and revolve around the Glee Club's performances. Every Variety Show starts with the classic *"We Need A Little Christmas"* and ends with the infamous Arthur

Murder Dancers. Songs such as *"Lo, How A Rose E're Blooming"* and *"The First Noel"* are venerable standards.

Even though the guys have fun, (*and we do have fun!*) when it comes to the music, we're all business. All music is memorized by performance time—another Glee Club tradition.

Other traditions are less evident, but no less important. Making good friends, supporting each other in times of crisis, and helping the group succeed are just as important as creating extraordinary music.

Glee Clubbers are leaders on campus, and continue to be leaders in life after college. That is one of the Glee Club's finest traditions.

Camraderie

The UNI Varsity Men's Glee Club is a vibrant social organization. Weekly rehearsals are enhanced by after-rehearsal gatherings (*Seminar*), and other events. Many alumni will tell you that some of their happiest college memories are of the times spent around the tables at The Other Place *"The O.P."* (*or Tony's, or The Lark*) with their Glee Club buddies, in the true spirit of camaraderie.

The Glee Club has visited most of the great cities of Europe—from Athens to Zurich—and many places in between. The powerful strains of *"Brothers, Sing On!"* have been sung from such places as the summit of Mount Vesuvius in Italy, a glacier in the Tyrolean Alps, ancient castles in Wales, the deck of a ship on the tossing Aegean Sea, and the Coliseum in Rome.

To visit these amazing places is awesome, but to experience them with the Glee Club is truly a life-changing experience!

We Need A Little Christmas

JERRY HERMAN
VARSITY MEN'S GLEE CLUB

Counting Carol

ZACHARY WADSWORTH
VARSITY MEN'S GLEE CLUB

Star of Wonder

TERRE ROCHE
VARSITY MEN'S GLEE CLUB

Cold Weather

ARR. ADAM THOMPSON
THE SINGPINS

Halcyon Days

MELISSA DUNPHY
VARSITY MEN'S GLEE CLUB

Keltainen Huone

MICHAEL E EDGERTON
VARSITY MEN'S GLEE CLUB

Brightest and Best

SHAWN KIRCHNER
VARSITY MEN'S GLEE CLUB

Closer to Christmas

JASON DERULO
ORCHESIS DANCE COMPANY

The Play:

***"The Mystery of
Who Stole Christmas"***

WRITTEN & DIRECTED
BY ALEX HANSON

• I N T E R M I S S I O N •

FEATURING THE
MUSICAL STYLINGS OF
WATCH FOR SQUIREL





Lo, How A Rose E'er Blooming

ARR. ARCHIBALD T. DAVISON
VARSITY MEN'S GLEE CLUB

What Was I Made For?

ARR. MARYANN MUGLIA
VARSITY MEN'S GLEE CLUB

The First Noel

ARR. FENNO HEATH
VARSITY MEN'S GLEE CLUB

Hallelujah

ARR. ADAM THOMPSON
THE SINGPINS

Christmas Medley

RICHARD GREGORY
VARSITY MEN'S GLEE CLUB

Sparkle Jolly Twinkle Jingley

ARR. ANDY BECK
VARSITY MEN'S GLEE CLUB

Santa Claus is Comin' to Town

THE AUDIENCE

Dance of The Sugar Plum Fairies

PETER TCHAIKOVSKY

Santa Claus Visits the Great Hall

Silent Night
ARR. AVI KAPLAN,
KEVIN OLUSOLA, AND BEN BRAM
ANDANTE

and

Christmas Can-Can

TRADITIONAL
THE 2024
ARTHUR MURDER DANCERS

Tuba Bells

ARR. AIDAN ANDERSON
UNITUBA

UNI Fight Song

VARSITY MEN'S GLEE CLUB



Our director of the UNI Varsity Glee Club, **John Wiles**, grew up in the Arizona desert. He began taking piano lessons from his mother at a young age, but always dreamed of playing professional basketball for the Phoenix Suns. When it became clear that basketball was not a viable employment option, he moved to Texas to study music in college.

Throughout his education, John studied under patient and wise teachers. He and his wife, Amy, met as freshman in college and John has spent every day since their first date trying to be a loving partner. In 2010 he came to teach at the University of Northern Iowa and is grateful for every moment. (*Well, almost every moment.*) The university, along with the students, alum, his colleagues, and the Les Hale Endowment Fund Board, support him in a myriad of professional and personal ways.

When not at the university, John likes to spend his time shooting hoops with his two children, Ruthie and Tommo, who fill him with boundless joy.





Matthew Anderson
Sophomore
Baritone



Mikael Anderson
Junior
Bass



Nolan Balk
Sophomore
Tenor 2



Jaegar Barlas
Junior
Baritone



Grant Behrens
Freshman
Baritone



Erlin Bell
Junior
Baritone



Tyson Bentley
Freshman
Tenor



Laiken Blommers
Senior
Baritone



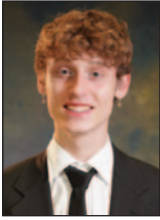
Ethan Brincks
Freshman
Tenor 2



Deon Brown
Freshman
Tenor 2



Chase Burbridge
Alumnus
Tenor 2



Kyle Burke
Freshman
Bass



Carter Bush
Senior
Bass



Kaleb Carda
Sophomore
Bass



Nick Chen
Senior
Bass



Luke Clewell
Sophomore
Baritone



Braxton Cross
Senior
Bass



Jason Dennis
Freshman
Baritone



Connor Doyle
Sophomore
Tenor 2



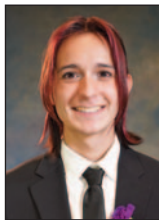
Mitchell Duesing
Sophomore
Tenor 2



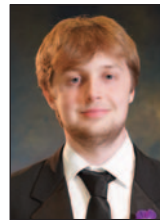
Nicholas Duncan
Junior
Baritone



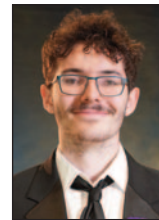
Noah Elgatian
Senior
Bass



Aldo Escalera
Freshman
Tenor 1



Noah Fisher
Freshman
Bass



Alexander Franzen
Freshman
Baritone



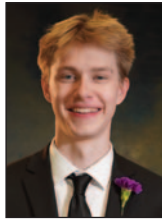
2024 PERSONNEL



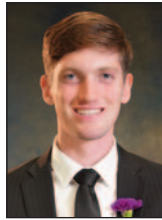
AJ Gibson
Senior
Baritone



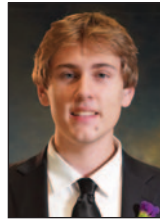
Jake Gochenouer
Alumnus
Bass



Aidan Grafft
Senior
Tenor 2



Bryson Grove
Junior
Piano



Chase Hamilton
Freshman
Baritone



Dom Hammel
Sophomore
Tenor 1



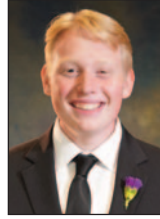
Alex Hanson
Senior
Bass



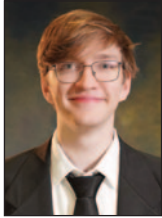
Noah Hartman
Sophomore
Baritone



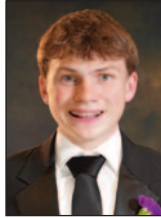
Evan Heggen
Alumnus
Bass



Hank Hewitt
Freshman
Baritone



Levi Hodge
Freshman
Baritone



Carter Homan
Senior
Tenor 1



Nick Huinker
Senior
Baritone



Trey Hulbert
Sophomore
Tenor 2



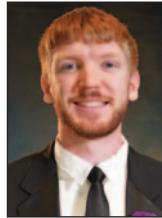
Keelan Hunter
Sophomore
Tenor 1



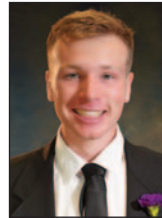
Owen Jackel
Sophomore
Tenor 2



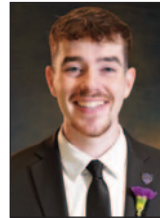
Brendan Janicki
Freshman
Bass



Adam Johnson
Sophomore
Baritone



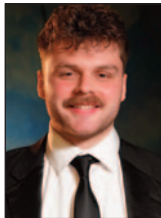
Nathan Johnson
Sophomore
Bass



Aidan Jones
Senior
Bass



Ty Kelderman
Senior
Baritone



Steven Klabunde
Junior
Baritone



Grant Kramer
Sophomore
Baritone



Will Krueger
Junior
Baritone



Micaiah Krutsinger
Senior
Baritone



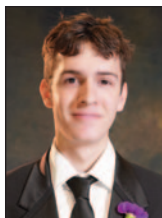
Garrett Lamp
Sophomore
Tenor 1



Christopher Lang
Junior
Bass



Aidan Leahy
Junior
Baritone



Pierson Lee
Sophomore
Tenor 1



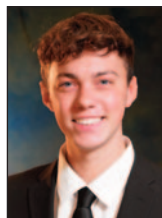
Benjamin Lumley
Junior
Tenor 1



Brice Lund
Alumnus
Baritone



Reece Madren
Freshman
Tenor 1



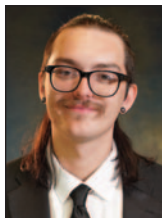
Davis Manternach
Junior
Tenor 1



Paul Marlow
Alumnus
Bass



Nyx Mayberry
Freshman
Baritone



Aidan McMahon
Senior
Bass



Kolton Messer
Freshman
Baritone



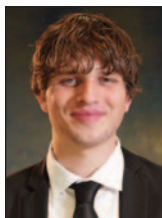
Zach Middtling
Freshman
Tenor 2



Alex Cassey Milan
Freshman
Bass



Rico Miller
Freshman
Bass



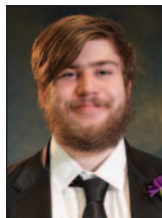
Jackson Minton
Sophomore
Baritone



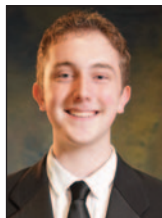
Logan Mitchell
Freshman
Bass



Gabe Mueller
Senior
Tenor 2



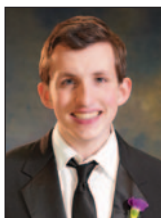
Caleb Murra
Sophomore
Bass



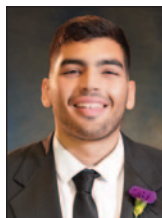
Luke Nelson
Junior
Baritone



Jack Noehren
Sophomore
Baritone



Alex Oswald
Sophomore
Baritone



Alex Otterpohl
Junior
Baritone



Cade Parker
Sophomore
Tenor 2



Alex Perez
Freshman
Baritone



2024 PERSONNEL



Hunter Philpott
Senior
Bass



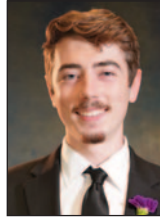
Peter Jason Quill
Senior
Bass



Maclain Ray
Junior
Tenor 1



Lance Reicks
Junior
Tenor 1



Finnigan Riley
Freshman
Baritone



Gabriel Salazar
Sophomore
Baritone



Cedric Sattgast
Freshman
Baritone



Lance Schmitt
Senior
Tenor 1



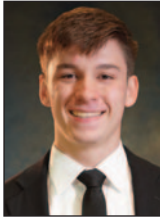
Ethan Schnee
Freshman
Bass



Austin Sellers
Freshman
Bass



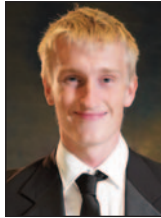
Ian Shelton
Freshman
Baritone



Lucas Shirbroun
Sophomore
Bass



Caleb Shonk
Senior
Bass



Parker Sjomeling
Sophomore
Bass



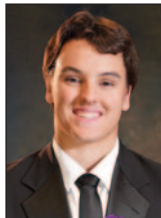
Isaac Thornton
Senior
Bass



Samuel Timmerman
Freshman
Tenor 2



Sander Tompkins
Freshman
Baritone



Benjamin Trainer
Freshman
Tenor 1



Joey Trainer
Senior
Tenor 1



Brock Trenkamp
Junior
Baritone



Jon Turner
Junior
Bass



Ethan Ver Helst
Junior
Baritone



Josue Villatoro
Sophomore
Baritone



Nick Wallestad
Junior
Tenor 1



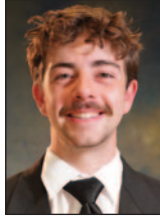
Kolten Webber
Alumnus
Bass



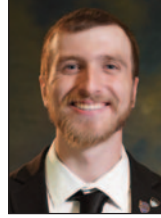
Matthew Webster
Freshman
Bass



Brandon Wellman
Senior
Baritone



Kaleb Wesselink
Freshman
Bass



Kyle Williams
Senior
Baritone



Seth Yoders
Senior
Tenor 2

A C C O M P A N I S T



Bryson Grove is a third-year Choral Music Education major from South English, Iowa. Bryson grew up on his parents' family farm along with three brothers, and his family has always supported his music endeavors. Bryson's passion for music began when his mother started teaching him piano when he was three years old. He has been involved in music ever since, and Bryson is thrilled to serve as the Glee Club accompanist this year!

Some of his other hobbies include spending time with friends, playing sports, and watching movies, especially *The Lord of the Rings*.

G R A D U A T E A S S I S T A N T



Alan Beving is a glutton for punishment and is back at UNI for his master's degree in Choral Conducting. Originally from Hartley, Iowa, he graduated from UNI in 2020 with his degree in Music Education. He spent the past four years teaching at Southeast Valley High School in Gowrie, IA where he was High School Choir Director, Musical Director, and Play Director. Alan spends most of his time practicing, studying, and performing, but if he's not doing one of those things, he's likely losing at video games. Alan is glad to be back and honored to work with the Glee Club and their particular brand of hijinks.

E M C E E



Paul Marlow (UNI, '88) has been a member of the Glee Club, as a student and alumnus, for 28 years. Paul has filled in as emcee "temporarily" for the past 21 years, he says, "*until a more competent replacement can be found.*" Over the years, Paul has served as Santa Claus, helped create the Glee Club's programs, web site, and marketing campaigns. Paul and Mark Janssen (UNI '04) co-produced an award-winning documentary about the Glee Club entitled ***Brothers Sing On – The Road to St. Peter's*** in 2005.

He was awarded the Distinguished Alumnus Award in 2010. Paul is creative director and partner for a marketing firm in Cedar Rapids, Iowa, where he lives with his wife Theresa, daughter Betsy and dog Harley.

THE UNI VARSITY M



University of M

WE BELIEVE IN THE POWER OF MUSIC TO LIFT UP, IN

2024

EN'S GLEE CLUB



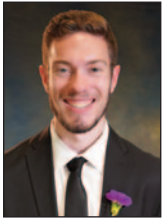
northern Iowa

INSPIRE AND HELP MAKE THE WORLD A BETTER PLACE

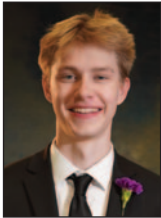


The Council is the governing body of the UNI Varsity Men's Glee Club. Gentlemen of the Council work tirelessly to promote the best interests of the Glee Club, and our values of Excellence, Tradition and Camaraderie, while building valuable leadership skills that will help them in their post-graduate life. Leaders in the Council are elected by their peers.

The 2024 – 2025 Glee Club Council



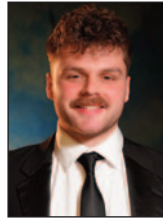
Braxton Cross
Head of Finance
Shell Rock, IA



Aiden Grafft
Head of Traditions
Garner, IA



Nick Huinker
Head of Activities
Garner, IA



Steven Klabunde
Council Chairman
Waterloo, IA



Will Krueger
Head of Recruitment
West Des Moines, IA



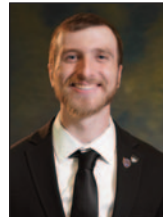
Benjamin Lumley
Head of Merchandise
Boone, IA



Hunter Philpott
Head of Tours
Waukee, IA



Brock Trenkamp
Head of Music
Delhi, IA



Kyle Williams
Head of Social Media
West Des Moines, IA



Our auditioned a cappella group, The SingPins is comprised of Glee Club members ranging from freshmen to alumni. They perform contemporary music, as well as classic Glee Club standards. Brock Trenkamp and Jon Turner co-direct The Sing Pins.

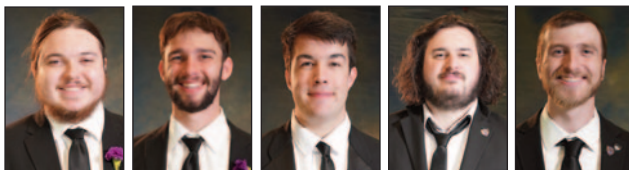
The 2024 – 2025 Sing Pins



Kaleb Carda Sophomore Bass	Connor Doyle Sophomore Tenor 2	Jake Gochenouer Alumnus Bass	Dom Hammel Sophomore Tenor 1	Noah Hartman Sophomore Baritone	Trey Hulbert Sophomore Tenor 2	Aidan Jones Senior Bass
---	---	---	---	--	---	--------------------------------------



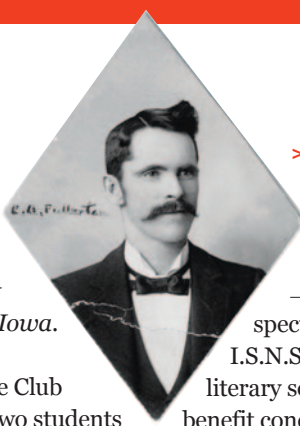
Gabe Mueller Senior Tenor 2	Lance Reicks Junior Tenor 1	Ian Shelton Freshman Baritone	Isaac Thornton Senior Bass	Benjamin Trainer Freshman Tenor 1	Joey Trainer Senior Tenor 1	Brock Trenkamp Junior Baritone
--	--	--	---	--	--	---



Jon Turner Junior Bass	Ethan Ver Helst Junior Baritone	Nick Wallestad Junior Tenor 1	Kolten Webber Alumnus Bass	Kyle Williams Senior Baritone
-------------------------------------	--	--	---	--

THE UNI VARSITY MEN'S GLEE CLUB

is one of the most beloved and active organizations at the University of Northern Iowa.



> *First Glee Club Director*
Mr. Charles A. Fullerton —
Upon his death, President Malcom Price said, "Thus passes one of nature's noblemen."

The history of the Glee Club goes back to 1888. Two students of Iowa State Normal School, Charles Fullerton and his brother Robert, organized the ***I.S.N.S. Glee Club***, during the 1888-1889 school year. Charles, who earned his degree at I.S.N.S. in 1890, returned to I.S.N.S. as a faculty member in 1897, and rose to become head of the department in 1909.

In 1893, the name of the group was changed to ***The Minnesingers Glee Club***. They were known for their

spectacular performances at the I.S.N.S. Baccalaureate ceremonies, literary society presentations, and benefit concerts. The group even went on tour in Iowa. The Minnesingers Glee Club sang as part of the program for laying the cornerstone of the Auditorium Building in 1900. Mr. Fullerton continued to play a central role in the Glee Club during his career at Iowa State Teacher's College (ISTC).

The Glee Club suspended activity after the U.S. entered World War I in 1917, but was reorganized in 1921 by William E. Hays. In 1924, the Glee Club presented a



MINNESINGERS

> **The Minnesingers Glee Club, circa 1890** — *The Glee Club tradition goes back over 136 years at UNI. The 'I.S.N.S. Glee Club' was founded in 1888, just 30 years after the start of the very first collegiate men's glee club in America, the Harvard Glee Club, which was founded in 1858.*



> **Varsity Men's Glee Club, 1963** —*The Glee Club was truly a varsity group—many early glee clubbers were athletes as well, representing every sport, and every academic major at State College of Iowa (UNI's name from 1961-67). Director Les Hale is on the far right. Note the SCI shield patch on their blazers.*

benefit performance to raise money for the Campanile to a full house in the Auditorium at the Spring Music Festival.

The Glee Club had to suspend activity yet again in 1941, after the U.S. entered World War II. I.S.T.C. went without a glee club for nearly 20 years.

The Glee Club was re-established on October 1, 1960, by Dr. Les Hale. Dr. Hale is considered the founder of the **Varsity Men's Glee Club** in the modern era. In the 1960's, the Glee Club was truly a varsity group—many early glee clubbers were athletes also, representing every sport, and every academic major at Iowa State Teachers College. The Glee Club's first Spring Concert was performed in Lang Hall Auditorium in 1961.

In 1974, Bob Byrnes took over as director. The Glee Club began producing the annual Christmas Variety Shows in 1978, in the 600 seat Russell Hall Auditorium.

In 2000, the Glee Club moved to the 1,550-seat Great Hall of the Gallagher-Bluedorn Performing Arts Center. To date, the Varsity Men's Glee Club can claim more sold out performances in the Great Hall than any other student or professional group.

The Glee Club has traveled overseas every other year since 1980. During past tours, concerts were performed in Austria, the Czech Republic, England, Germany, Greece, Holland, Iceland, Ireland, Italy, Norway, Poland, Spain,

> **Wales, 2018** — *Mr. Ryan Daisy stands victorious over his vanquished foes after storming Caernarfon Castle.*





> **Rome** — *The Glee Club and Cecilians performed at St Peters Basilica, the largest church in the world, May 2024.*

Switzerland and Wales, including performances at St. Peter’s Basilica in 1996, 1998, 2004, 2010 and 2024.

In 2020, the Glee Club kept finding ways to lift up, inspire and help make the world a better place. Overcoming the adversities of a worldwide pandemic, the group rehearsed in a parking garage, and overcame all odds to offer a live performance. The Glee Club created virtual online experiences, and used the sales from their Christmas CD to give a \$3,000 donation to the Northeast Iowa Food Bank.

The powerful strains of “*Brothers, Sing On!*” have been sung from such amazing places as the summit of Mt. Vesuvius in Italy, a glacier in the Tyrolean Alps, ancient castles in Wales, the deck of a ship over the tossing Irish Sea, on the Acropolis in Athens (*albeit briefly*) and the Coliseum in Rome.

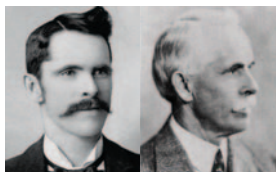


VARSITY
MEN'S GLEE CLUB
 1 8 8 8

The Glee Club has created unforgettable memories for generations. Since 1888, thousands of UNI alumni share a bond forged by music, in a true spirit of camaraderie as brothers in song.

> **The 2024 Glee Club** — *poses in the Church of St Agnes, on the Piazza Navona in Rome, Italy.*





Mr. Charles A. Fullerton (ISNS, 1891) founded the I.S.N.S. Glee Club in 1888, when he was a student at Iowa State Normal School. As director of the Glee Club for over 30 years, he welded the 'untrained voices of farmboys' into a singing group which performed with skill and taste. Mr. Fullerton closed performances with an old favorite; he would turn to the audience

and invite any former glee clubber present to come forward and join in the singing. He directed the group until 1921. At the Spring concert in 1940, Mr. Fullerton himself was present to celebrate the 50th anniversary of the club.



Mr. William E. Hays (ISTC, 1912) directed the Minnesingers Glee Club at ISTC from 1921 until 1941. Mr. Hays led the group with great energy. Under Hays' direction, the Glee Club presented benefit fundraisers to build the Campanile, and tours across Iowa. Professor Hays pioneered the use of recording equipment (an old Edison phonograph) which allowed the student to hear by immediate playback the sound of his own voice.



Dr. Les Hale, UNI Professor Emeritus, re-established and rebranded the Glee Club in 1960. He took the job at UNI only after being promised by the University that he could start a men's glee club. He named his group The Varsity Men's Glee Club, and was director for 14 years. The Glee Club became one of the most popular groups on campus. He introduced "*Brothers, Sing On!*" to the group, and the choral anthem is still performed on every Spring Concert to this day.



Mr. Robert 'Bob' Byrnes (UNI '71, '74) became director of the Varsity Men's Glee Club in 1974, and he led the group for 30 years. He started the Christmas Variety Shows in 1978. In 1980, Bob led the Glee Club on its first tour of Europe, becoming the first of *any* group from UNI to do so. The Glee Club experienced a tremendous loss when Bob suffered a major stroke. On May 28, 2004, Glee Club members and alumni gathered at the hospital in Cedar Falls, and sang for Bob. As the men sang "*Brothers, Sing On!*", Bob died. He was only 54 years old. An alum later said that he had never seen more grown men cry in his entire life. It was Bob's goal that the UNI Varsity Men's Glee Club be "*one of the best choruses on the planet.*"



Dr. Brad T. Barrett was named director of the UNI Varsity Men's Glee Club in 2004, following the death of Bob Byrnes. Dr. Barrett led the Glee Club to several SE Iowa venues in 2005 on Iowa Tour, and NW Iowa concerts in 2007. He led the Glee Club's first-ever tour of Ireland, Wales and England in the Spring of 2006. Dr. Barrett also led the Glee Club on a tour of Poland and the Czech Republic in 2008.



Dr. Fred C. Kiser served as interim director of the UNI Varsity Men's Glee Club for one year, starting in the fall of 2009. In May, 2010, he led the Glee Club on the group's 16th European Tour, including a fourth performance at St. Peter's Basilica in Rome. Fred Kiser arranged the first TTBB version of the "*UNI Fight Song*" for the Glee Club. In December of 2010, Professor Fred C. Kiser earned his Doctor of Musical Arts degree from the University of Iowa.

There are many ways to support the **GLEE CLUB!**

Scan the QR code to learn how you can help!



SCAN ME



The **Les Hale Endowment Fund** was created in 1997 to help ensure the future of the Glee Club at UNI. Nearly a half-million dollars has been pledged to the fund so far, but only the interest earned by the fund can be spent.

These funds stay within the Glee Club to help with academic and tour scholarships, tuxedo purchases, charter bus rentals, alumni relations, director support and more. All gifts are tax deductible and donors who contribute \$1,000 or more will receive this striking lapel pin and be acknowledged by the Club in a variety of ways.



Alumni and Friends of the UNI Varsity Men's Glee Club started The **Christmas Variety Show Fund** in 2018 to help ensure the future of the Christmas Variety Shows at UNI, and to enhance the experience for all show patrons. Contributions to this fund may be eligible for the Endow Iowa Tax Credit, available through the Community Foundation of Northeast Iowa.

Just as with the Les Hale Endowment Fund, only the interest can be spent. These funds stay within the Glee Club to help offset the ever-growing costs associated with producing the Christmas Variety Shows. Donors of \$1,000 or more will receive this festive Santa's Cap lapel pin.



The **UNI Legends Fund** was created to support glee clubbers with monetary scholarships for the group's international tours. Just as with our brother funds, only the interest can be spent. This fund will help offset touring expenses both internationally and domestically. When your gift reaches the \$10,000 level, **an annual scholarship will be awarded in your name** (or in the name of an individual or entity chosen by you) to

a deserving student. It's a yearly, permanent reminder of your commitment and dedication to the Glee Club. This is your chance to change the lives of UNI students, by helping to give them a once-in-a-lifetime opportunity to tour with the Glee Club overseas.



The Glee Club wishes to extend our gratitude to all our supporters:

The UNI Glee Club Alumni & Friends
The Les Hale Endowment Fund
Board of Directors:

Chair, Hunter White (2022)
Vice Chair, Dan Hansen (2022)
Secretary, Joe Granzow (1990, 95)
Treasurer, Troy Tabbert (2004)
Past Chair, Brian Hintz (2002)

Members:

Don Boekhoff (1989)
Chris Brokaw, (1996)
Douglas Cline (1985)
Kyle Ferden (2010)
Kevin Grieme (2007)
Christopher Pollpeter (2015)
Troy Tabbert (2004)
Thomas Winkelman (2015)
Amy, Ruthie & Tommo Wiles
Black Hawk Roof Company
Brent Bierstedt, *Unlimited Web Network*
Cedar Falls Copyworks on College Hill

The Creative Gene, LLC
The Gallagher-Bluedorn Performing
Arts Center Staff & Stage Crew:
Molly Hackenmiller, Aharon Moody,
Amanda Ristvedt and Chris Tuzicka
Hotel Cristoforo Colombo, Rome
Iowa Public Radio
Mom & Dad
Mudd Advertising
Kelli McCarthy, *UNI Special Events*
Paul & Theresa Marlow
Rausch Bros. Trucking
Chip Schwickerath, *New Hampton
Transfer and Storage*
Jim Sigmon, *Union-Hoermann Press*
The Other Place
The UNI Alumni Association
The UNI Foundation—Dan Breitbach
The UNI School of Music:
Dr. Melinda Boyd, Caroline Francis,
Tammy Hook and Sandy Nordahl



> A very special Thank You to Father Paul Peters

After 45 years of playing the Great Hall organ on the Variety Shows, Father Paul Peters was regrettably unable to accompany us on the shows this year.

Our favorite organist from Prairie du Chien, WI, Father Peters played organ on the very first Christmas Variety Show back in 1978. Since then, Fr. Peters has been with us on every Variety Show but one—an astonishing record.

The Glee Club thanks Father Paul Peters for his commitment and gift of music to the community.



LES HALE ENDOWMENT FUND / BOB BYRNES KINGPINS

AS OF NOVEMBER 22, 2024

PLATINUM KINGPINS — Gifts of \$15,000+

*Dickinson, Craig ('81)
*Graves, Kevin ('93) and Liz
*Heinle, Steven ('93)
Johnson, George ('71)
Jones, F. Austin ('86) and Kim M.

GOLD KINGPINS — Gifts of \$10,000+

**Bauer, Jason ('00)
The Les Hale Chorale – Hale, Dr. Les and Colleen, Director and Founder, UNI VMGC
Rodriguez, John ('82) and Lorene
*Smith, Scott ('82) and Claudia
*Thompson, Lee ('76) and Carol ('74)

SILVER KINGPINS — Gifts of \$5,000+

*Boekhoff, Don ('89) and JoNel ('87)
Bonar, Rick ('91)
Drewelow, David ('76) and Lonna
*Gwin, Leo ('81) and Anita
*Janssen, Mark ('04) and Jessie ('04)
*Keller, Dylan ('14)
***Patterson, Matt ('99) and Blair ('99)
Staudinger, Alexander
Strub, Lee ('85) and Laura ('85)

BRONZE KINGPINS — Gifts of \$2,500+

Bierstedt, Brent ('02)
Bott, Kevin ('08) and Andrea
Bruner, Kenneth ('12)
Cline, Doug ('85) and Susan ('85 & '93)
Croston, Nicholas ('19) and Caitlyn
Dawson, Ryan ('11)
DeJongh, Andrew
*Eltjes, Scott ('88) and Jodi ('88)
Ford, Edward ('82)
Foster, Dr. Austin P. ('12) and Dr. Devon Green, Andrew ('10)
Greiving, Brian ('96) and Katie ('96)
James, Chad ('95) and Sabrina
Kempker, Alex
Marlow, Paul ('88) and Theresa ('91)
Miller III, Raymond ('03) and Lindsey ('03)
Mefford, Chris ('91) and Heather
Riley, Adam ('02) and Jessica ('02)
Rose, Kevin ('01) and Rosanne ('00)
Schuler, Steven ('00) and Sara ('01)
Snook, Warren ('00) and Angela
Strabala, Keegan ('14)
Wiles, John and Amy
Winter, Mike ('84) and Denice

KINGPINS — Gifts of \$1,000+

Adamson, Peter
Althof, Stephanie ('92)
*Andersen, Darik ('01)
Barrett, Dr. Bradley T.
Belden, Scott H. ('71) and Myrna J.
*Berthussen, Joel ('90) and Ann ('90)
Bertram, Derrick
Billings, David ('96) and Melissa ('96)
Blanshan, Kevin ('79 & '96) and Dee
Blount, James ('13)

Boisen, Eric ('15)
Book, Joe ('01)
Boomer, Michael ('97) and Kathryn ('99)
Brannon, Micheal ('91)
Breen, David ('83) and Mary
Brickley, Adam ('07)
Brokaw, Chris ('96) and Deb ('01)
Bruss, Adam ('04)
Burford, Teale ('08 & '11)
Byrnes, Chelsie and Bejar, Rafael
Byrnes, Dustin and Cladera, Ed
Byrnes, Mark and Candace
Byrnes, Robert ('71 & '77)
Cakerice, Kirk ('77) - Brothers, Sing On!
- In loving memory from Jed ('77) & Debbie Fisk & Dan ('77), Sue Scoles
Carlin, Dan & Mary (Cooney) ('61 & '69)
Carlin, Patrick ('00 & '03) and Hansen, Michael ('08)
Caviness, Brett & Pons, Dr. Oriol
Chaplain, Zach ('17)
Christiansen, Martin ('18)
Church, Randal ('81)
Clark, Lori Hockett ('87) and Richard
Conover, Chad ('94) and Jill
Cook, Colin ('16)
Crozier, Nathan ('11)
Cuvelier, Thomas ('84) and Susan
Dahmus, Dave ('71) - In memory
Daisy, Ryan ('18)
Derringer, Cory ('12)
Divoky, Joe ('06 & '08)
Drewelow, Andrew ('12) and Brianna ('12)
Duhrkopf, Clark ('89)
Duskin, Jeff ('87)
Ebert, Clark ('00) and Shary ('00)
Eggen, Paul ('83)
Elkin, Chad ('90) and Carrie Ann
Englebart, Tyler ('10)
*Federer, Erik J. ('98) & Shannon ('98)
Feilmeier-Marzen, Melissa ('03)
Ferden, Kyle ('10)
Ferguson, Jacob ('16)
Flege, Bill ('88) and Kelly
Foy, Christopher ('84) and Mary
Gardner, Loren ('03) and Carlene ('01)
Gaedelmann, Patricia
Gleason, Dan ('07)
Gleason, Michael ('06, '08) & Megan ('11)
Goeman, Bob ('92) and Deborah ('92)
Granzow, Joseph ('90 & '95)
Greve, Bret ('96)
Grieme, Kevin ('07)
Haack, Joel and Linda
Happel, Brian ('00) and Nicole ('09)
Harris, Jerry ('89) & Beth Jorgensen ('89)
Harris, Matthew ('04) and Adam Fanning
Hicks, Joddey ('91)
Hintz, Brian ('02)
Hodnefield, Boe ('04, '06)
Hoffman, Adam ('06)
Honeyman, Brandon ('15)
*Honold, Todd ('86)

Hoversten, Jake ('11)
Huff, Casey ('06)
Jackson, Brian ('85)
Janaszak, Aaron
Jensen, William
Jones, F. Addison and Marion A.
Kaduuce, Zach ('02) and Katie
Keahi, Chris ('97)
Ketelsen, Scott ('82) and Suzy ('84)
Kime, Justin ('19)
Klein, Joe ('84) and Lynn ('85)
Kleiss, Sam ('17) and Jenna
Koster, Brian ('03) and Cynthia ('03)
Lamb, Talon
Landis, Luke ('98) and Emily ('98)
LaRue, Richard ('74)
Leckband, Jordan ('19) and Meghan
Loney, Angie Monteith ('94) and Jeff ('96)
Lightbody, Larry ('75) and Jennifer ('75)
Lindeen, Eric ('06)
Magee, Michael ('80) & Sheryl ('80 & '81)
Marlow, Patric ('92)
McCord Sean ('17)
*McInnis, Mark and McInnis, Brian ('96)
Merck, Christopher ('19)
Meyer, Todd ('87)
Miller, Wesley
Moldt, Pete ('90) and Karen ('88)
Moody, Justin
Morton, David ('82) and Mary ('83)
Moss, Michael and Lori
Murray, Timothy ('84)
Neuendorf, Tracey ('99) and Chris
Nguyen, Henry
Nickerson, Doug ('91) & Candace ('87)
Nuehring, Corey ('96) and Michelle ('95)
Olson, Gregg ('96) and Jill
Owen, Ben ('15)
Owen, Ronald ('67) and Marilyn
Parker, Derrick ('94) and Heidi ('93)
Pauly, John ('99 & '01)
Peters, Paul
*Phillips, Jeremy ('87) and Deb Copeland
Pippert, Nathan ('00)
Porath, Adam ('03) and Angie ('03)
Pullen, Matt ('05)
*Rasmussen, Layne ('81) & Peggy ('86)
Rasmussen, Nancy
Reidy, Patrick ('08)
Renken, Neil ('07)
Rodgers, Derek ('06)
Ruden, Alan ('94) and Tanya ('96)
Schettler, Eric ('06)
Schmitt, Bob ('94) and Julie ('94)
Schmitz, Jim ('94) and Kim ('94)
Schroeder, Thomas ('89) and Jill
Schultz, Brent ('97)
Sharp, Mark ('88) and Kathryn
Smith, Josh ('05) and Nicole
Smith, Lane ('05) and Rachel ('04)
Smith, Skipper ('96) and Shelly ('97)
Snell, Brendon ('99) and Katie ('06)
Sparks, Mitch and Katie ('16)



CHRISTMAS VARIETY SHOW FUND SANTA'S HELPERS

AS OF NOVEMBER 22, 2024

*Stuber, Dan ('93) and Karen ('01)
 Tabbert, Troy ('04)
 Terpstra, Tyler ('07)
 Tille, Heath ('00) and Angela ('00)
 Tillman, Ed ('92 & '99)
 UNI Varsity Men's Glee Club
 Vandercook, Jeff ('78) & Terri ('78 & '79)
 VanLaere, Justin ('02) and Cayen
 Verdon, Jason ('95) & Lynn ('94 & '95)
 Voran, Brad A. ('81)
 Wander, Darren ('01)
 Warren, T.J. ('06) and Brittany ('06)
 *Weis, Rod ('87) and Rosalyn ('87)
 Wheeler, Brian ('87, '99) and Deanna ('88)
 White, Hunter ('22)
 Williams, Martin ('10)
 Williams, Robert ('10) and Dana
 Wogen, Darin and Michelle
 Wood, Landon
 Worm, Richard ('64) and Jane ('64)
 Youngstrom, Scott ('82)
 Yowler, Jaime
 Zwald, Kelly ('04)

*Corporate Match **Lifetime Pledge

SANTA'S HELPERS — Gifts of \$1,000+
 Brent Bierstedt ('02)
 Robert Byrnes ('71 & '77), Director and Creator,
 UNI Christmas Variety Shows
 Kevin Graves ('93)
 Brian Hintz ('02)
 Mark Janssen ('04)
 F. Austin Jones ('86)
 Eugene K. Heinle - In loving memory from the
 Brothers Heinle (Craig, Stuart & Steven)
 Steven Heinle ('93)
 George Johnson ('71)
 Paul Marlow ('88)
 Jennifer Staudinger - In loving
 memory from Glen Staudinger
 Lee Thompson ('76)
 Dr. John Wiles



THE UNI LEGENDS FUND

AS OF NOVEMBER 22, 2024

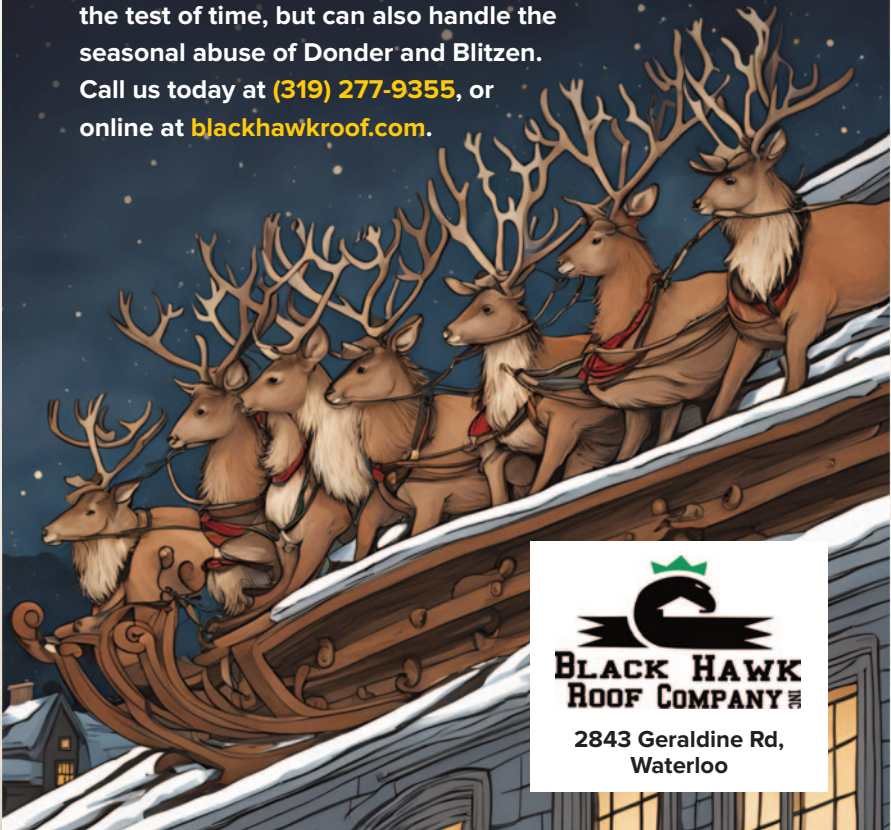
LEGENDS — Gifts of \$10,000+
 Brandon & Linda Breuer
 Carl & Donna Wessel, in memorial
 George Johnson, in memorial

REINDEER A PROBLEM? CALL BLACK HAWK ROOF COMPANY!

Everybody loves Santa Claus, with his miniature sleigh and eight tiny reindeer. But eventually, all that prancing and pawing of each little hoof can really do number on your roof!

That's when the folks at Black Hawk Roof Company can help. We build roofs that not only stand the test of time, but can also handle the seasonal abuse of Donder and Blitzen.

Call us today at **(319) 277-9355**, or online at **blackhawkroof.com**.



2843 Geraldine Rd,
Waterloo



When in Rome...

When **The Glee Club** performs in The Eternal City, they stay at the elegant Hotel Cristoforo Colombo. Halfway between Rome and the sea, between the city centre and Fiumicino Airport, the Hotel Cristoforo Colombo is the largest 4L Hotel with its 323 rooms.

In the charming, stylish **Symposium Restaurant**, you may taste Italian and regional cuisine, skillfully and artfully prepared employing locally sourced, high-quality ingredients, such as our famous chicken.

Except, it is not chicken. It may look like chicken, even taste like chicken. But mio amico, it is definitely **NOT chicken**. Coo Co!



The beautiful Symposium Restaurant



HOTEL CRISTOFORO COLOMBO
Via Cristoforo Colombo, 710, 00144 Roma
Phone: +39 06 5921901
hotelcolomboroma@4lcollection.com



2227 College St. · 319-266-2306

Order Online Anytime

at www.copyworks.com



IOWA PUBLIC RADIO

NEWS | CLASSICAL | STUDIO ONE

www.iowapublicradio.org

Are you ready
for a new career?

Check us out!

www.Mudd.Com/Careers

MUDD
ADVERTISING®



The O.P. on University—Proud to be the Official Home of the UNI Varsity Men's Glee Club

**THE UNI VARSITY
MEN'S GLEE CLUB**

**remembers the
brothers whom
we have lost
since 1969**

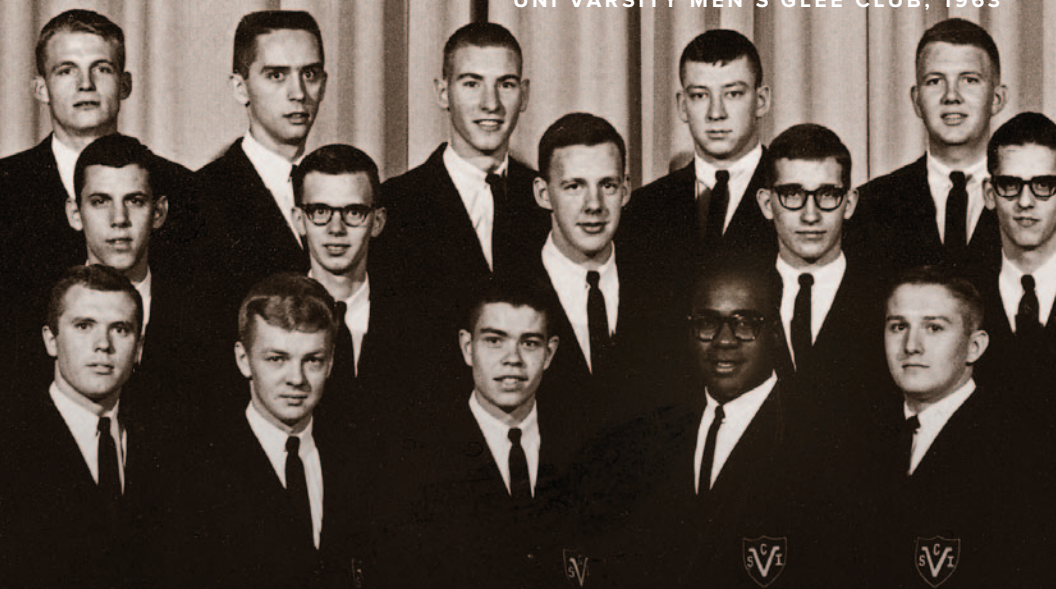
**Now and forever,
Brothers, Sing On!**



I N M E M O R I A M

David Aamodt	Class of 1975 – 06/29/2013
Douglas Archer	Class of 1973 – 09/14/2014
Todd Babberl	Class of 2001 – 01/12/2017
Benjamin Baird	Class of 2005 – 04/12/2008
Duane Bakkum	Class of 1972 – 11/25/2016
Scott Belden	Class of 1971 – 02/28/2008
Rodney Benedix	Class of 1977 – 02/03/2018
Roger Boorum	01/01/1996
James Brant	Class of 1971 – 07/01/1992
David Breen	Class of 1983 – 09/15/2006
Dennis Buffington	Class of 1973 – 05/01/1996
Bruce Bunch	Class of 1986 – 11/20/2006
Robert Byrnes	Director, '71 – 05/28/2004
Kirk Cakerice	Class of 1977 – 09/01/1997
Thomas Cate	Class of 1980 – 03/01/1990
Fred Chadwick	Class of 1967 – 04/23/2016
Gregg Cochran	Class of 1988 – 07/07/2007
Dave Dahmus	Class of 1971 – 06/11/2012
Russell Deholt	Class of 1975 – 01/01/1989
Gary Ericksen	Class of 1969 – 12/01/1981
Robert Galligan	Class of 1988 – 05/04/2017
Dennis Godfrey	Class of 1963 – 03/06/2012
Meredith Granger	Class of 1980 – 12/17/2017
James Groth	Class of 1970 – 04/01/1995
Les Hale	Founder, '60 – 08/01/2017
John Heinrichs	Class of 1978 – 06/03/2017
Keavin Hill	Class of 1977 – 04/12/2005
Clark Holthaus	Class of 1983 – 11/29/2011
John Hushagen	Class of 1965 – 12/03/2018
Roger Jacobson	Class of 1964 – 04/16/2015
James Jarvis	Class of 1976 – 09/17/1988
Gary Johnson	Class of 1970 – 07/05/2017
George Johnson	Class of 1971 – 09/16/2023
Don Ketelsen	Class of 1968 – 12/01/2016
Neal Kiewiet	Class of 1970 – 09/23/2014
Justin Kime	Class of 2019 – 02/17/2019
Lyle Knudson	Class of 1963 – 04/13/2017
James Kronlage	Class of 1974 – 04/01/1990
John Kunc	Class of 1994 – 07/14/2019
William Lance	Class of 1971 – 05/24/2012
John Lounsberry	Class of 1980 – 06/05/2014
James McMahon	Class of 1979 – 11/01/1995
Daryl Michel	Class of 1967 – 04/01/1989
Jon Osheim	Class of 1966 – 01/01/1969
Donald Osterhaus	Class of 1974 – 09/22/2019
Alan Petersen	Class of 1983 – 05/29/2010
David Phillips	Class of 1980 – 03/15/2007
James Russett	Class of 1983 – 06/16/2012
Rickey Sauer	Class of 1977 – 02/22/2001
Howard Schoonover	Class of 1972 – 07/29/2012
John Schreck	Class of 1978 – 11/01/1994
Cecil Shaw	Class of 1962 – 04/10/2008
Lane Smith	Class of 2005 – 01/10/2017
Timothy Tegels	Class of 1988 – 10/06/2019
Donald Thompson	Class of 1971 – 01/09/2004
Lee Thompson	Class of 1976 – 10/03/2020
Douglas Wilkinson	Class of 1974 – 03/01/1987
Michael Wold	Class of 1975 – 10/23/2015
Steven Young	Class of 1974 – 03/01/1993

UNI VARSITY MEN'S GLEE CLUB, 1963



IN THE COMPANY OF LEGENDS



Established in 1888, **The UNI Varsity Men's Glee Club** continues to make unforgettable music. If you want to be part of something extraordinary, join us for rehearsal in Jebe Hall on Mondays & Wednesdays, from 6:00 - 7:50 p.m. Discover the excellence, tradition and camaraderie that make the Glee Club exceptional. And **Be Legendary.**

UNI

University of Northern Iowa.