
Fall 2024 Ensemble Placement Auditions
Tuba Audition Repertoire

- I. Lincolnshire Posy: 3. Rufford Park Poachers – Percy Aldridge Grainger
 - a. Pickup to 51 – 1st bar of 63 (bottom octave)
- II. Symphony in Bb – Paul Hindemith
 - a. I – K (bottom octave)
- III. The Planets: Jupiter – Gustav Holst
 - a. 4th bar of 11 – 16th bar of 11
 - b. 16 – downbeat of the Presto after 17
- IV. Sight Reading

"LINCOLNSHIRE POSY"

Based on English Folksongs gathered in Lincolnshire, England by Lucy E. Broadwood and Percy Aldridge Grainger and set for Wind Band (Military Band)

by

PERCY ALDRIDGE GRAINGER

3. "RUFFORD PARK POACHERS"

(Poaching Song)

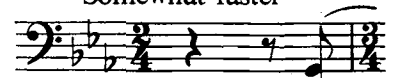
Full Score Edition

Assembled by Frederick Fennell

TUBA

Somewhat faster

$\text{♩} = 62-74$



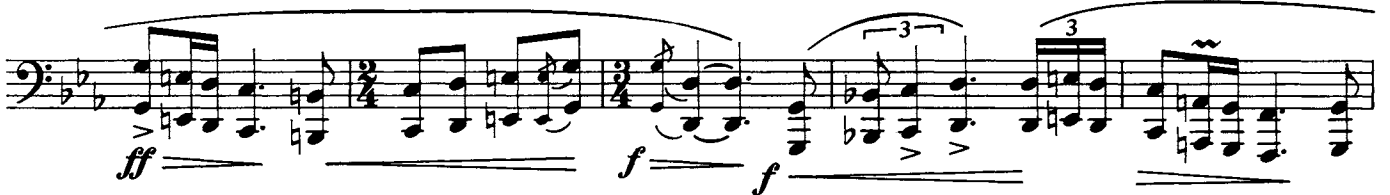
lower octave

throughout

f

Version A & B

51



Basses

Symphony in B flat

I

Paul Hindemith

Moderately fast, with vigor (♩ 88-)

lower octave
throughout

I tutti

124

128

One or two Solo

132

137

J tutti

141

145

150

154

K

Holst — The Planets

Bass Tuba

4
246 13 *1, 2 Trp. Maestoso.* *fff*

264 3 *fff*

268 1 *p* *cresc.* *ff*

275 12 *Trp. a 2* *accelerando marc.* *ff*

305 4 20 *f* *cresc.*

313 13 *Menomossa* *mf* *accel.* *atempo*

348 14 *d =*

348 15 *d =* *Trp. a 2* *f* 12 3 16 *mf*

365

372 8 *ff*

386 3 *d =* 17 *Lento maestoso. legato*

391 *accel.* *Presto* *p* *molto cresc.*

396 *Trp. f* 10